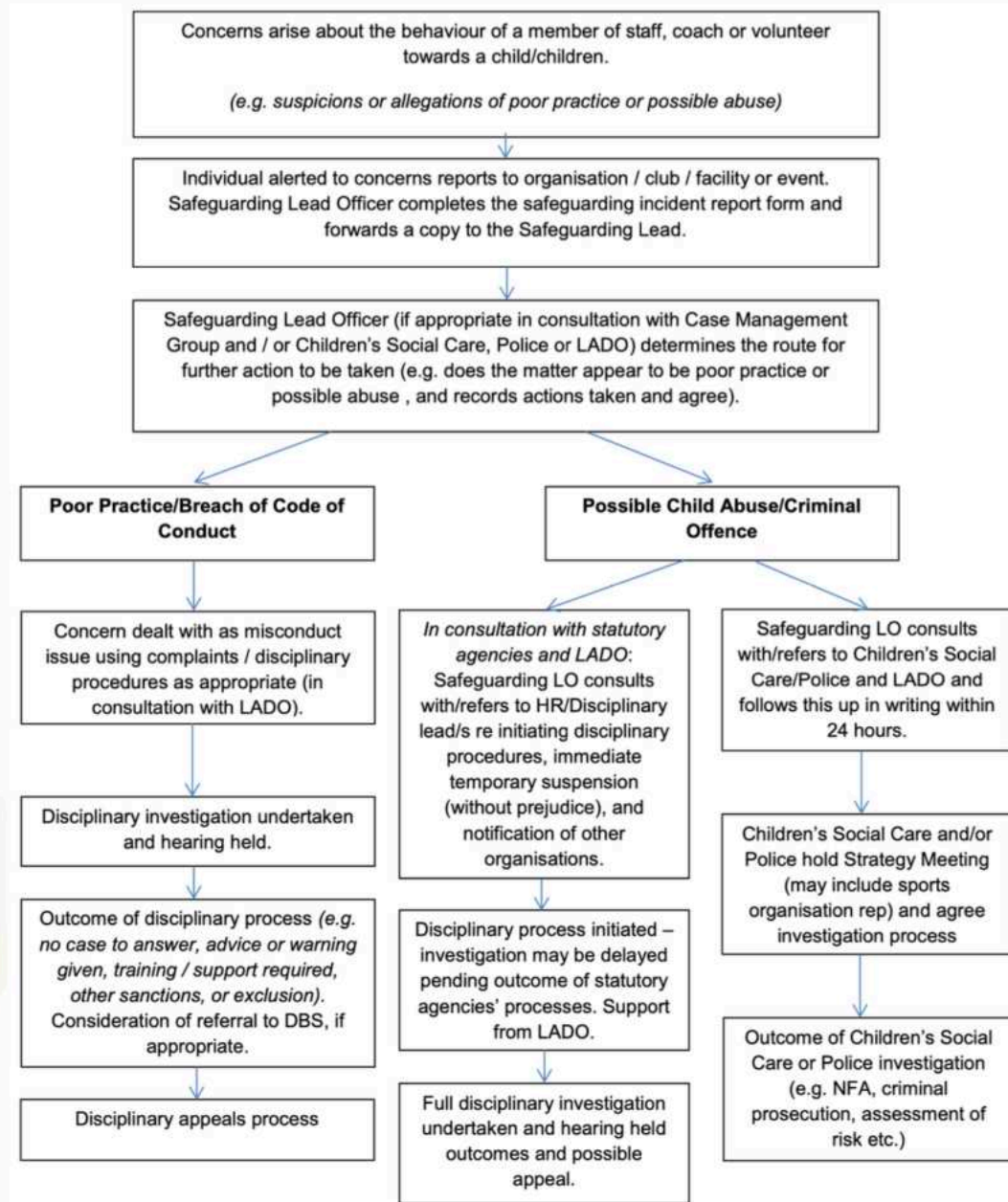


## Outline safeguarding reporting procedure concerns

### 1. About the behaviour of the organisation's staff member or volunteer (e.g. allegation about a coach or officer's behaviour towards a child)



For news, results and more visit:

**WWW.WELSHSNOOKER.COM**

✉ [enquiries@welshsnooker.com](mailto:enquiries@welshsnooker.com)

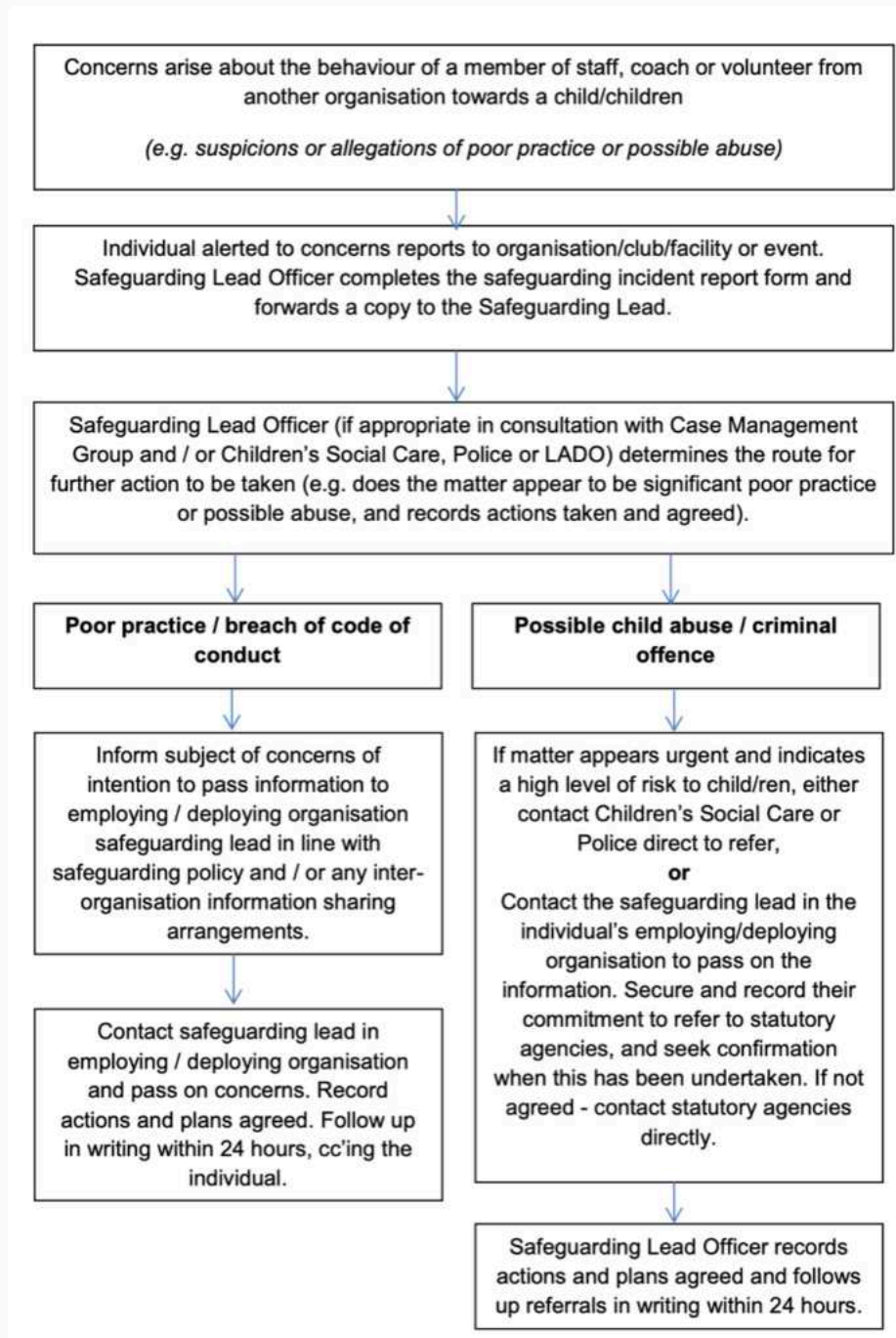
*sportwales  
chwaraeon cymru*



**WELSH  
SNOOKER**

## Outline safeguarding reporting procedure concerns

### 2. About the behaviour of another organisation's staff member or volunteer (e.g. allegations reported about an individual working for a partner organisation)



For news, results and more visit:

[WWW.WELSHSNOOKER.COM](http://WWW.WELSHSNOOKER.COM)

✉ [enquiries@welshsnooker.com](mailto:enquiries@welshsnooker.com)

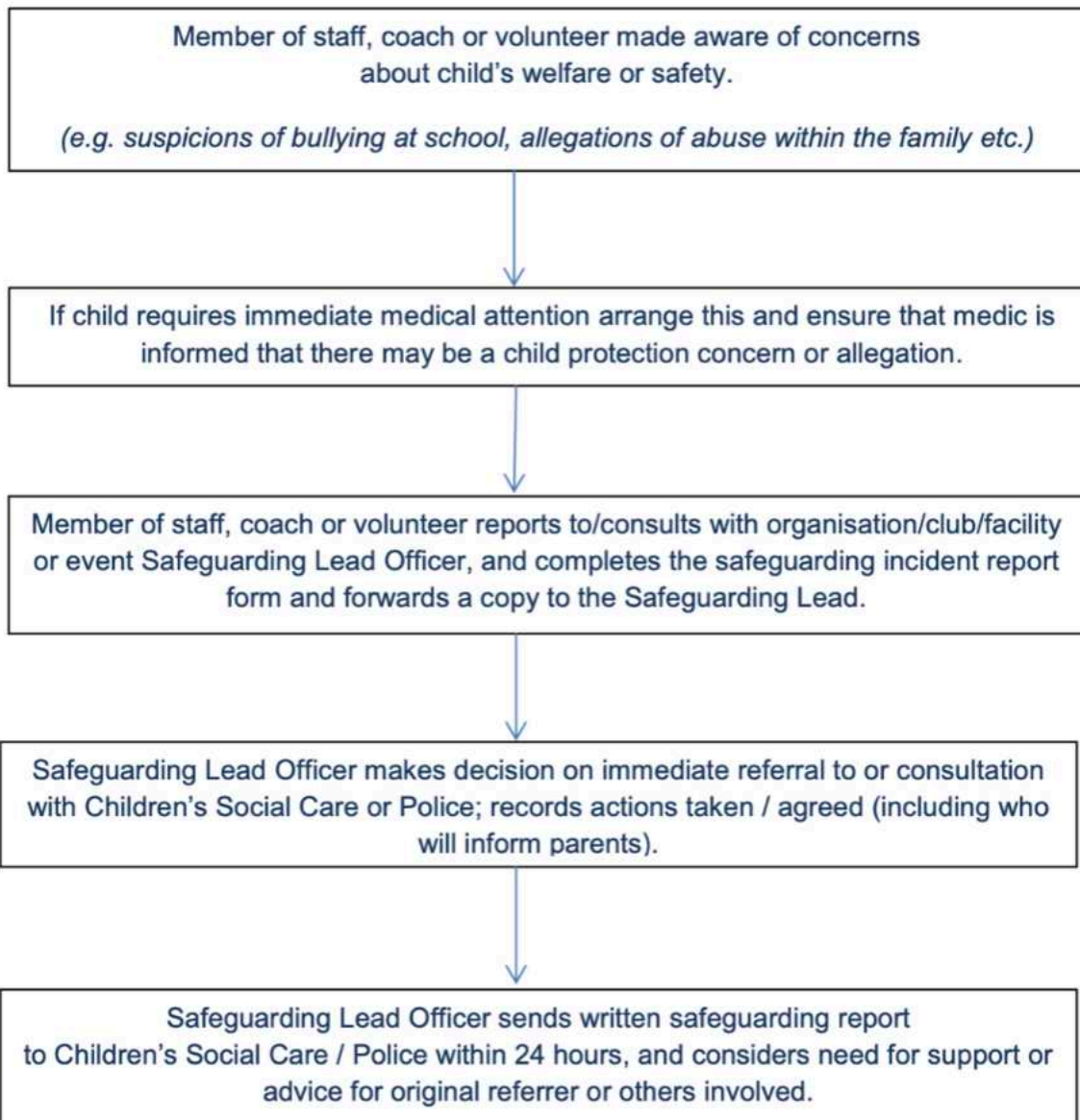
sportwales  
chwaraeoncymru



**WELSH  
SNOOKER**

## Outline safeguarding reporting procedure concerns

### 3. About children and young people arising outside of sport (e.g. at home, school or in the community)



For news, results and more visit:

**WWW.WELSHSNOOKER.COM**

✉ [enquiries@welshsnooker.com](mailto:enquiries@welshsnooker.com)

sportwales  
chwaraeoncymsu



**WELSH  
SNOOKER**